

owners manual

HIGH LEVEL RANGE WITH OVEN FOR RECREATIONAL VEHICLES MODEL 810-487B

FILE FOR
FUTURE
REFERENCE



CAUTION:
Read Rules for
Safe Operation
and instructions
Carefully

- Assembly
- Installation
- Repair Parts
- Operation



ELIXIR INDUSTRIES

TRAV'LER DIVISION

P.O. BOX 526

WAKARUSA, INDIANA 46573

instructions

RULES FOR SAFE OPERATION

1. Read the Owner's Manual and these Rules for Safe Operation carefully. These instructions are based on safety considerations.
 2. Check that all applicable state and other codes regarding installation have been followed. In the absence of such codes, the installation must conform with American National Standard for Recreational Vehicles, A119-2-1970 or Standard CGA 10.1/CSA Z240.4 - Gas Equipped Recreational Vehicles & Mobile Housing. If code requires venting of regulator see instructions.
 3. Top burner flame size should be adjusted so that it does not extend beyond the edge of the cooking utensil. Do not store flameable items in storage areas above appliance.
 4. Do not use appliance for space heating. Do not use oven for storage space.
 5. Check that minimum clearances to combustible materials have been maintained.
 6. Never light matches in the vicinity if the odor of gas is noted.
 7. A window or other air vent should be opened slightly while using the range. Gas burner flames consume oxygen which has to be replaced to assure proper combustion.
 8. Do not tamper with the burner orifices or change their size.
2. After selecting the best location, cut opening in countertop and overhanging cabinet as shown.
 3. Install gas supply and route gas line (not furnished) to range. Here you should seek the assistance of a qualified service man. Usually the supplier of the gas will be able to provide expert help in this respect. Too, he will be able to provide the necessary parts, including the copper gas line. The following should be carefully considered:
 - A. Max. gas supply pressure is 14" W.C.
 - B. The gas tank must be located in a protected place and cannot UNDER ANY CIRCUMSTANCES be located within the confines of the trailer or camper. The supplier of the gas will be acquainted with the applicable codes with respect to the location of the gas supply tank.
 - C. Gas supply line should be copper and should be routed in protected locations so as not to be damaged. A single, continuous line is recommended.
 - D. No connections should be made in the gas line where the connections would be concealed after completion of the installation. All parts used in making connections must be of type acceptable for this purpose. Gas lines should not make any sharp bends nor have any kinks. The line should not be under strain.

GENERAL

1. Your High Level Range has been Certified for Performance and Safety by the American Gas Association and The Canadian Gas Association for use with L.P. gasses only.
2. Burner inputs are shown on a plate attached to each appliance. Refer to this plate for ratings and minimum clearances. The orifices have been sized at the factory at a pressure of 11 inches water column (6½ ounces approximately) for liquefied petroleum gases.

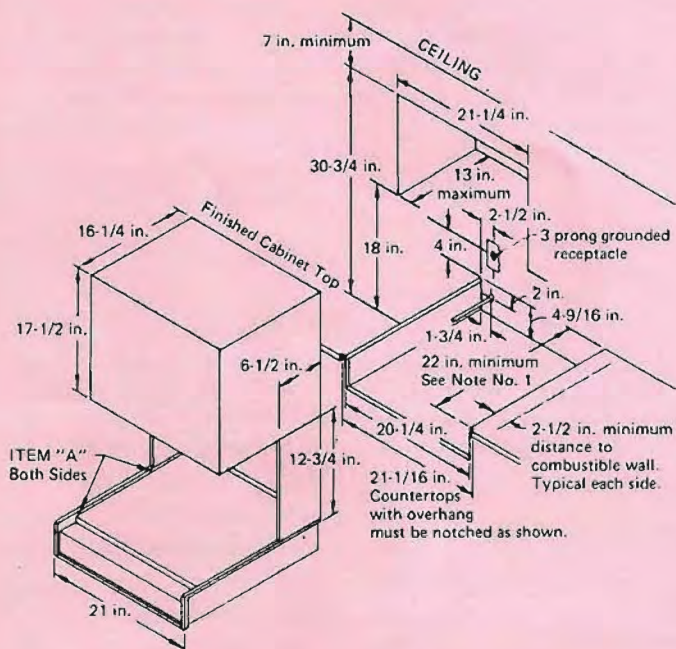
ASSEMBLY

Your new range is fully assembled with the exception of the main top, burner grates, and grate clip holddowns. These will be placed in or on unit after range installation is completed.

INSTALLATION

1. Consider the following when selecting the location for your high level range.
 - A. Location of gas supply and routing of gas line.
 - B. Minimum clearances of unit from combustible materials. These clearances are:
 - Sides - 2 inches minimum as measured from edge of burner box trim.
 - Rear - Zero inches.
 - Top - 7 inches minimum as measured from top of unit to ceiling.
4. Install electrical supply wiring to unit in accordance with applicable state and other codes. This unit is equipped for 12 Volt Direct Current (D.C.) service. DO NOT CONNECT TO HIGHER VOLTAGE. See cabinet cut-out diagram for entry location of vehicle power supply leads into cut-out. This wire is to be 200°C rated.
5. Place unit partially into cut-out. Do not push in all the way.
6. Remove filter from Blower and Light Compartment located under oven. Observe unit supply leads and grommeted hole provided to allow entry of vehicle power supply leads. From behind pass vehicle wiring into the Blower and Light Compartment through grommeted hole. Within compartment, using recognized insulated connection devices, connect vehicle and unit electrical leads. BE SURE TO CONNECT POSITIVE TO POSITIVE AND NEGATIVE TO NEGATIVE.
7. Push unit fully into proper position in cabinet cut-out. Replace filter on Blower and Light compartment after making sure excess vehicle supply wire is pushed back through grommeted hole.
8. Secure in place with 4 No. 8 wood screws indicated as item "A" in cabinet cutout drawing.
9. Make gas connection.
10. Check regulator setting (11" W.C.) using 12" W.C. inlet pressure.

11. After installing the gas supply and making all connections, check thoroughly for possible gas leaks. Turn the valves on your unit to their "off" positions. Open valve on gas supply tank. Using a soap and water solution, check each gas connection one-at-a-time by brushing the soap and water solution over the connection. Presence of bubbles will indicate a leak. Tighten fitting and recheck for leaks. **UNDER NO CIRCUMSTANCES USE MATCHES OR FLAME FOR CHECKING LEAKS.**
12. Light both pilots (one in oven and one in range unit). See adjustment instructions.
13. Place main top on unit. Place burner grates in place with the clips provided. Instructions are provided on the envelopes in which the clips are shipped. These grate clips will hold the grates in place while traveling.
14. Your High Level Ranges with oven is now ready for use. Sometimes the burners will not ignite immediately and seem to "blow" slightly when they do ignite. This is usually due to the presence of air in the gas lines which will clear itself within seconds.



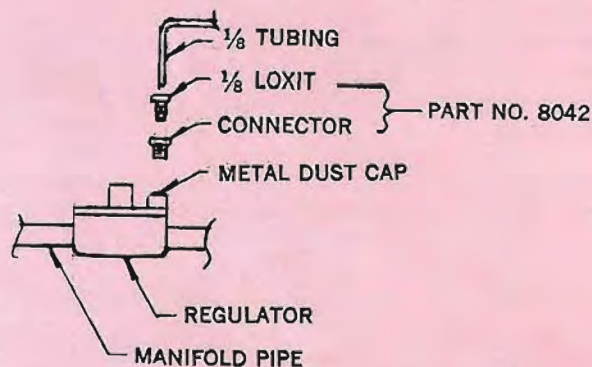
NOTE NO. 1 — This dimension is given from front face of cabinet. Anything over this dimension will leave a space between oven and rear wall.

NOTE NO. 2 — Cabinet to be constructed to prevent creation of storage space around the recessed portion of the unit, and any openings around gas and electrical service outlets closed.

INSTRUCTIONS FOR VENTING REGULATOR

(This may not be required - check state and other codes)

1. Remove dust cap (snaps out).
2. Assemble connector. (Connector and $\frac{1}{8}$ Loxit can be obtained from Elixir under Part No. 8042)
3. Form $\frac{1}{8}$ tubing (not furnished) to suit - through gas supply hole in back of burner and outside. Tubing should not have any sharp bends or kinks.
4. Slip Loxit on tubing and assemble to connector.



HOW TO ORDER REPAIR PARTS

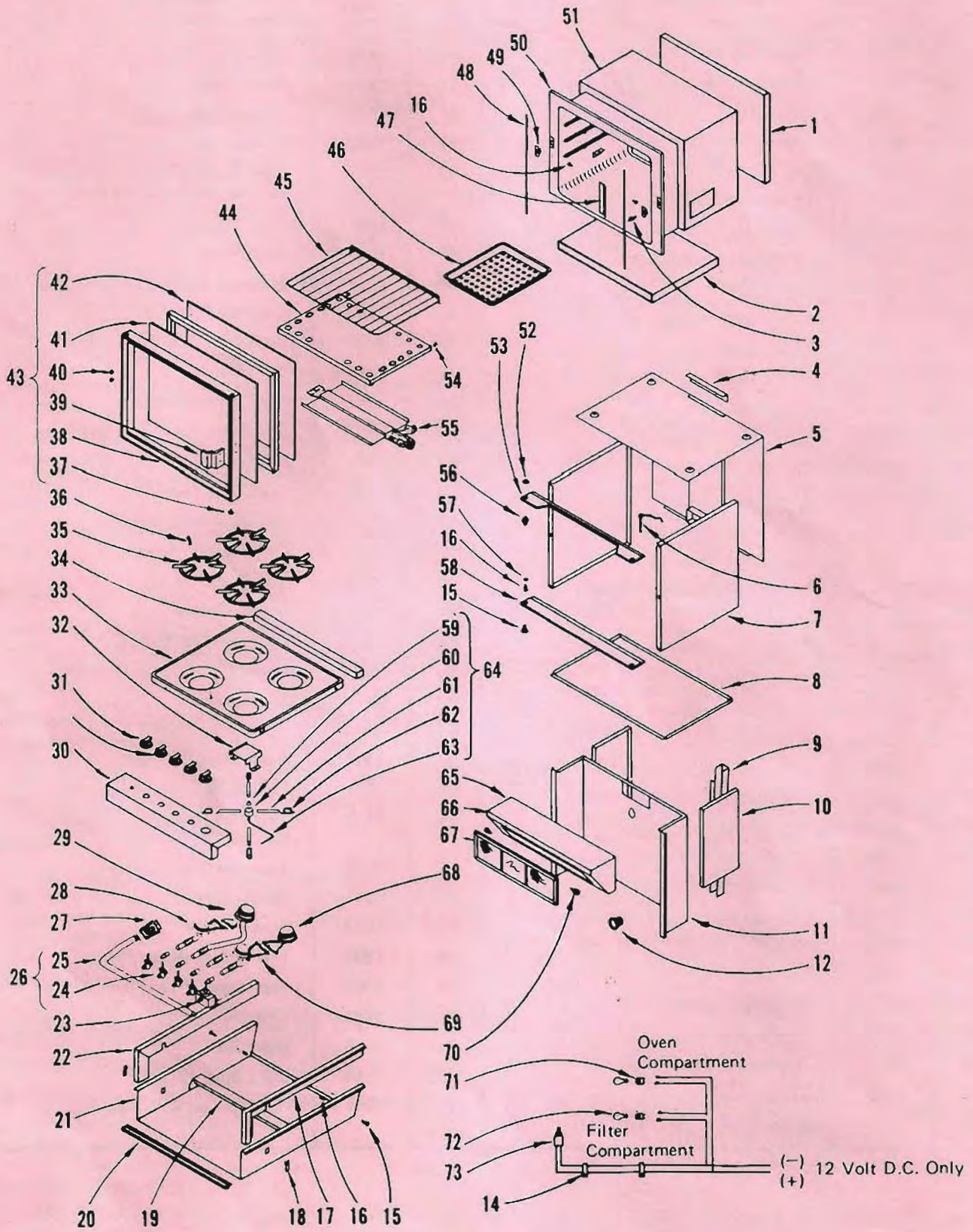
The Model Number will be found stamped on the rating plate located inside the burner box on the burner box liner. Always mention the Model Number when requesting service for your Range with oven.

All parts listed herein may be ordered through Elixir Industries, or any of its authorized service centers. When ordering parts by mail, selling prices will be furnished on request or parts will be shipped at prevailing prices and you will be billed accordingly.

WHEN ORDERING REPAIR PARTS, ALWAYS GIVE THE FOLLOWING INFORMATION AS SHOWN IN THIS LIST.

1. The PART NUMBER
2. The PART DESCRIPTION
3. The MODEL NUMBER 810-487 B
4. The SERIAL NUMBER
5. The NAME of UNIT — High Level Range with Oven

HIGH LEVEL RANGE WITH OVEN MODEL NUMBER 810-487B



Key No.	Part No.	Description	Key No.	Part No.	Description
1	1000	Insulation, Oven Back	39	1366	Door Handle
2	0999	Insulation, Oven Bottom	40	1223	Plug Button
3	1348	Door Strike	41	7249	Outside Glass
4	0078	Blower Duct Cover, Top	42	7298	Inside Glass
5	0062	Oven Exterior Top and Back Assembly	43	7218	Oven Door Assembly, Complete (37, 38, 39, 40, 41, 42)
6	7272	Locking Pin and Chain	44	7301	Oven Bottom
7	0082	Oven Exterior Side	45	1145	Oven Rack
8	0079	Oven Exterior Bottom	46	7177	Broiler Pan and Insert Assembly
9	0084	Wire Guard	47	7283	Capillary Guard
10	0081	Oven Support Side	48	7210	Oven Door Seal
11	0070	Oven Support	49	1349	Door Catch
12	1352	Heyco Electrical Bushing	50	7281	Oven Body Assembly
14	1344	Nylon Clamp	51	0998	Insulation, Oven Top and Sides
15	2302	10-24 x 1/2 Screw	52	2381	Keq Nut
16	1343	Tee Nut	53	1142	Oven Top Trim
17	1140	Burner Box Trim (Right)	54	1350	Oven Bottom Spring
18	1269	Main Top Hold-down	55	7298	Oven Burner Assembly
19	0072	Top Burner Support	56	0089	Top Pivot Pin
20	1144	Manifold Panel Trim (Lower)	57	1346	Nylon Washer
21	0074	Burner Box	58	1143	Oven Bottom Trim
22	1141	Burner Box Trim (Left)	59	0972	Cone
23	7294	Thermostat	60	0971	Lighter Cup
24	1131	Top Burner Valve	61	7306	Flash Tube
25	1130	Manifold Pipe	62	7307	Flash Tube Connector
26	7293	Manifold Assembly Complete (24, 25)	63	0974	Pilot Tube
27	8041	Regulator	64	1132	Top Pilot Assembly Complete (59, 60, 61, 62, 63)
28	7303	Top Burner (left front)	65	0087	Light and Filter Support
29	7305	Top Burner (left rear)	66	0085	Blower Cover
30	0067	Manifold Panel	67	1353	Blower Filter
31	1138	Top Burner Knob, Front	68	7304	Top Burner (Right Rear)
32	0066	Top Pilot Shield	69	7302	Top Burner (Right Front)
33	0053	Main Top	70	0102	Filter Retainer
34	0075	Main Top Extension	71	1148	Light Socket
35	0003	Top Burner Grate	72	1146	Light Bulb 12 Volt
36	2002	Grate Hold-down Clip	73	7251	Wire Harness with Switch
37	1224	Nylon Bumper			
38		Oven Door Frame			

operating instructions

OPERATING INSTRUCTIONS

To operate the oven in your Trav'ler range, please do as follows:

Turn the temperature control knob from the "PILOTS OFF" position to the "OFF" position. After this has been done, light the pilot in the oven (constant pilot). If the range is equipped with a top lighting pilot, light it at the same time.

After the oven pilot is lit, turn the oven temperature control knob to the desired temperature (example, 350 degrees).

You will notice the constant pilot grow in size. It is now being used as a heater pilot. The heater pilot will heat the sensing bulb from the mercury control valve located in the rear of the range (back side). Once this sensing bulb has reached a sufficient temperature it will open the mercury valve permitting it to release gas to the main burner.

When the oven has reached the desired temperature the thermostat will stop the supply of gas to the heater pilot and once again it will become the constant pilot, thus causing the sensing bulb from the mercury control valve to cool. The mercury valve will close and stop the gas supply to the main burner.

When the oven requires more heat, the same cycle will again repeat itself. The only time the oven will operate differently

would be when the thermostat would be in the broil position. The main burner flame would then decrease in size and not shut off until the thermostat was turned down or the off position.

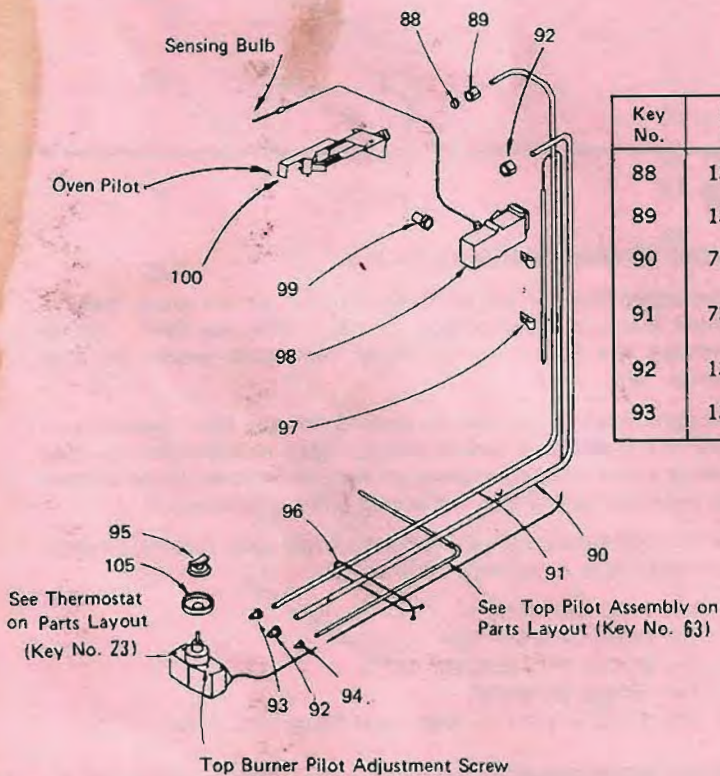
The Harper-Wyman "Debbie" control has no by-pass setting. It will cycle off and on at all temperature settings except broil. No by-pass adjustment is necessary.

IMPORTANT

The Oven Thermostat on this range is designed to enable you to turn off the Oven Constant Pilot and the Top Burner Pilot by simply turning the Thermostat Dial to the "PILOTS OFF" position. When the Dial is in this position you cannot light the Top Pilot or Oven Constant Pilot. When the Dial is in the "OFF" position both of the Pilots are on.

AUTOMATIC OVEN BURNER PILOT

A cycling type automatic oven burner pilot is used with the "Debbie" system. It has two pilots in one. The Constant Pilot, which should be burning all of the time with a small flame, and the Heater Pilot. The combination of the two ignites the oven burner.



Key No.	Part No.	Description	Key No.	Part No.	Description
88	1306	3/16 Inch Compression Ferrule	94	1330	1/8 Inch Loxit NUT
89	1305	3/16 Inch Compression Nut	95	1137	Thermostat Knob
90	7297	1/4 Inch Aluminum Tubing (To Mercury Valve)	96	0101	Tubing Clamp
91	7300	3/16 Inch Aluminum Tubing (To Pilot)	97	0099	Thermobulb Clip
92	1303	1/4 Inch Loxit Nut	98	7296	Mercury Valve
93	1331	3/16 Inch Loxit Nut	99	0115	Orifice Hood
			100	7299	Oven Pilot
			101	1266	Thermostat Bezel