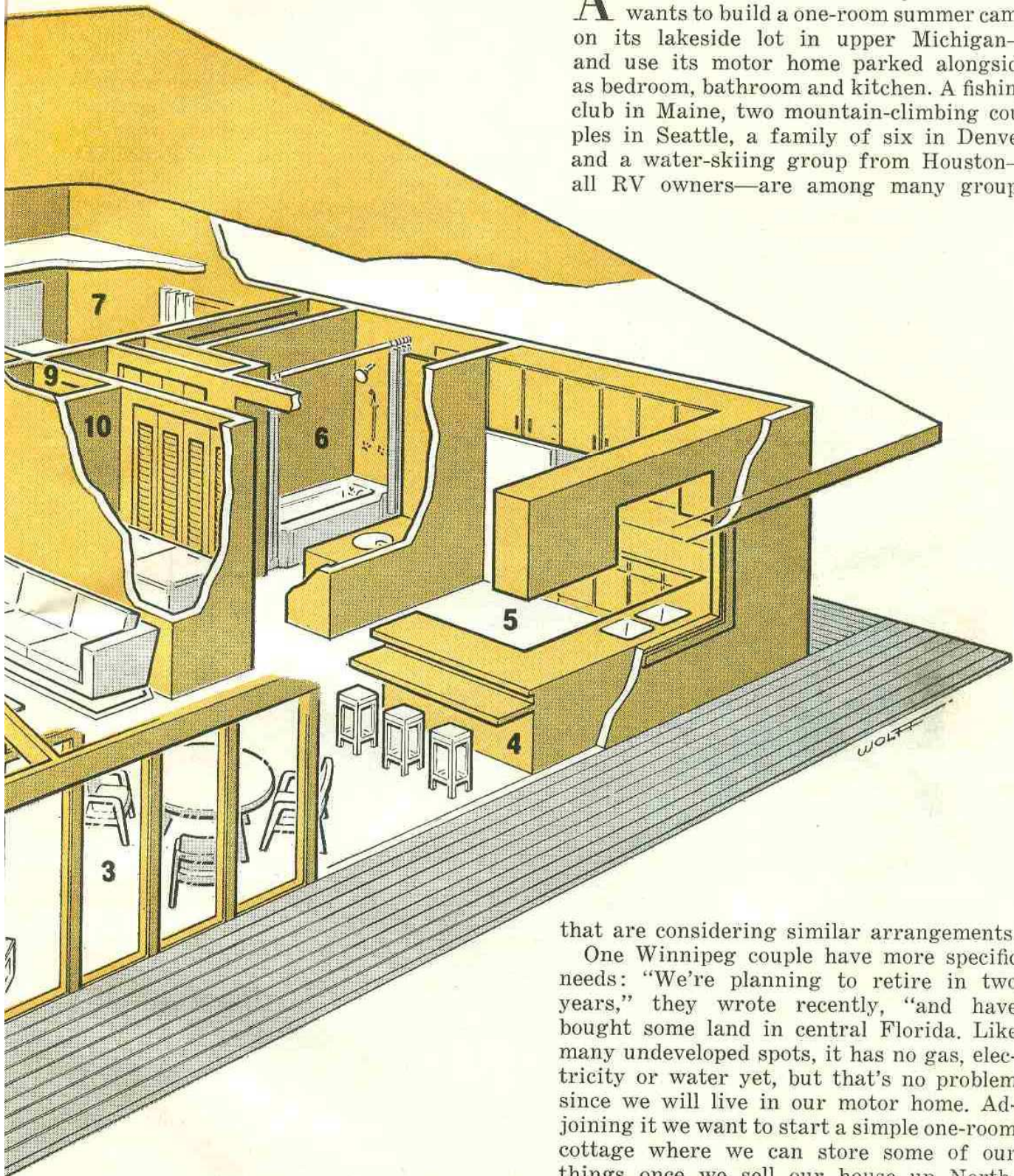


RV home away from home

by Bill McKeown OUTDOORS EDITOR

A recreational vehicle family in Toledo wants to build a one-room summer camp on its lakeside lot in upper Michigan—and use its motor home parked alongside as bedroom, bathroom and kitchen. A fishing club in Maine, two mountain-climbing couples in Seattle, a family of six in Denver and a water-skiing group from Houston—all RV owners—are among many groups



RV cottage built around motor home and its utilities has: (1) door opening from (2) deck into basic (3) living area. Added room divisions can include (4) bar/breakfast counter with pass-through space to (5) kitchen. Plumbing and sewer connections allow addition of (6) bathroom. Shutting off back of two-car garage makes (7) bedroom with (8) storage over. (9) Utilities room with furnace and central air conditioner plus (10) laundry room are refinements. (11) Level ramp leads to (12) motor home. (13) Workshop. (14) Garage door. Louvered (15) front, side ventilation under (16) roof.

that are considering similar arrangements.

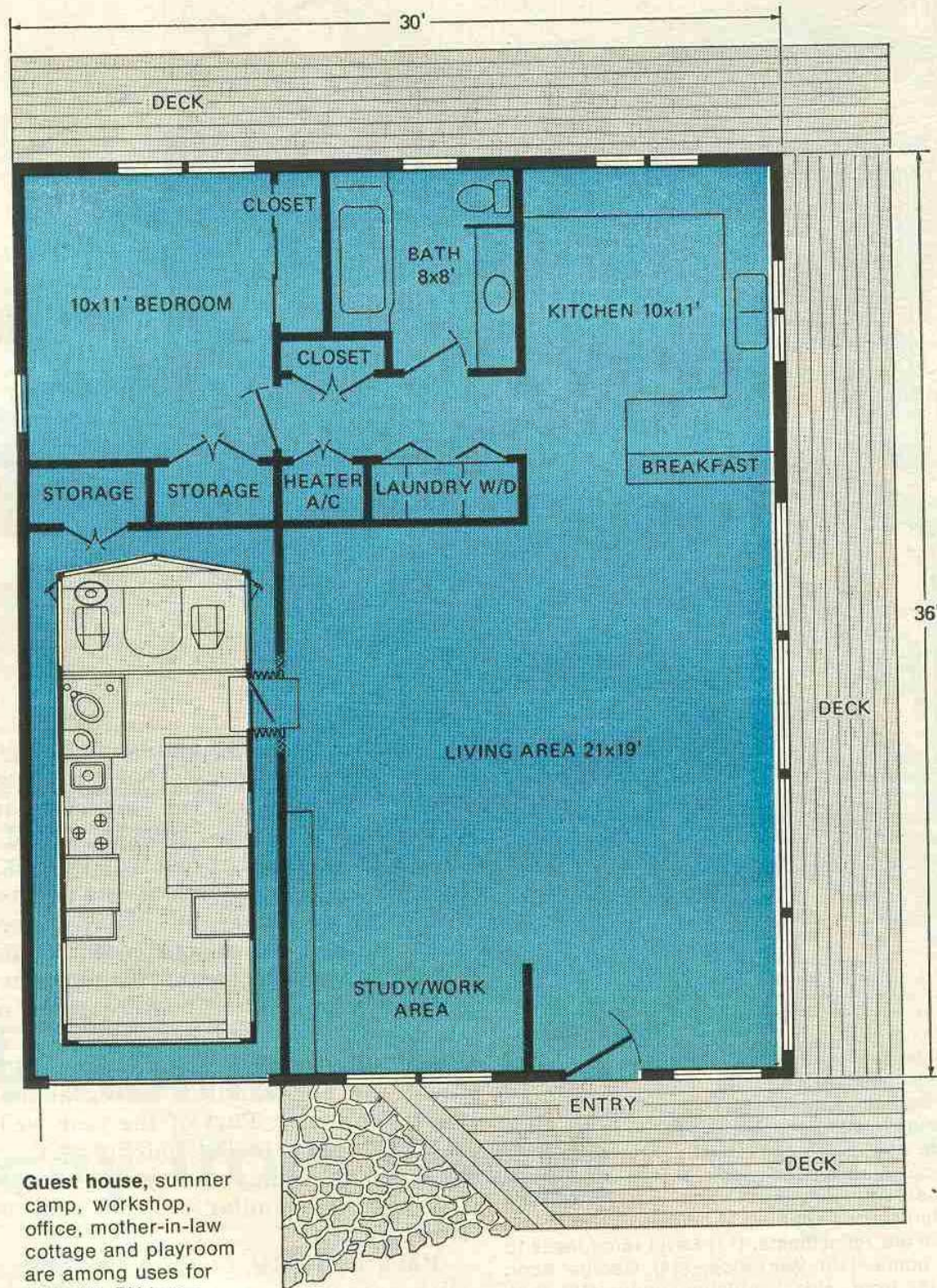
One Winnipeg couple have more specific needs: "We're planning to retire in two years," they wrote recently, "and have bought some land in central Florida. Like many undeveloped spots, it has no gas, electricity or water yet, but that's no problem since we will live in our motor home. Adjoining it we want to start a simple one-room cottage where we can store some of our things once we sell our house up North. Eventually we will expand and fix it up with room for our children and grandchildren when they visit. Part of the year we'll shut it up and take to RV touring again. What kind of house can you suggest?" Several RV retirees have similar projects underway in New Mexico.

PM's basic RV base, shown here, starts with an enclosure and carport. Check local

building codes and restrictions, plus insurance requirements, before getting started. Since some communities don't like the appearance of an RV, we have enclosed the carport with a garage door but louvered the top for ventilation so that the generator, airconditioner or furnace can be employed. For extensive use, exhaust hose extension or chimney connection may be installed.

Floor level of the camp cottage is planned at a height equal to the RV interior with a walkway leading in and accordion walls and

ceiling fitting snugly around the RV door. Initially the room can be a simple screened-in shelter—with windows, walls, plumbing, room divisions, kitchen and bath, furnace and airconditioning, separate bedroom and outer decking added later. Storm shutters can close up the house completely when the owners drive off on tour. With sleeping accommodations in the vehicle and a fold-out sofa in the living area, back-bedroom space may be kept as a garage extension for a second car. ★★★



Guest house, summer camp, workshop, office, mother-in-law cottage and playroom are among uses for versatile RV home.