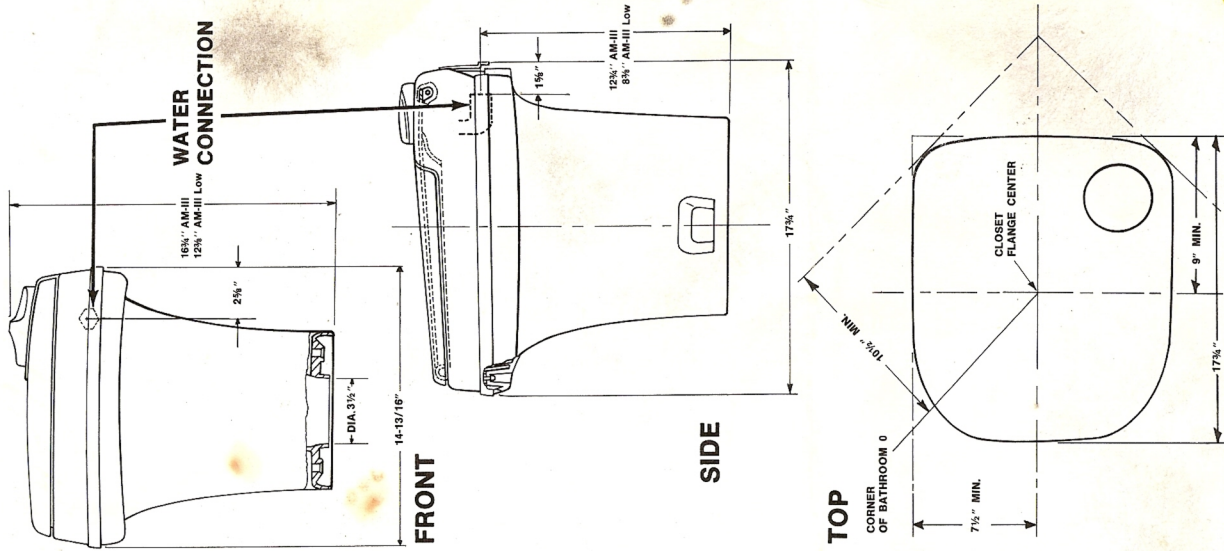


**DIMENSIONS**



**HOW TO ORDER PARTS**  
Refer to your local Thetford dealer for parts and service. If necessary to order directly from the factory, always include the following information:  
Your name and address.  
Product name, model and serial number.  
Part name and number.

**All chemicals are not created equal.**

- Aqua Kem® Holding Tank Deodorizer.**
- Fresh pleasing odor • Outsells because it lasts longer
  - Compatible with all sanitation systems • Liquid concentrate • Biodegradable • Non-corrosive • Septic tank safe • Child-resistant cap.
- Aqua Soft® Toilet Tissue.**
- Soft, snowy white tissue • Flushes easily from bowl ... disintegrates rapidly in holding tanks • Helps prevent messy clogs • Recommended for portable and fixed sanitation systems • Uniquely packaged in reusable drawstring ditty bag • Four rolls per package.
- Aqua K-7® cleans and polishes seven surfaces:** plastic, vinyl, wood, leather, metal, fiberglass—even formica. Just squirt it on, wipe it off and watch it shine. Gives newness to your boat, camper, RV—plus many household items.
- Aqua Bowl® Cleaner.** Don't waste your precious vacation cleaning! In just 15 scrub-free minutes, a capful of Aqua Bowl leaves the toilet bowl clean and fresh. Nonabrasive soft-scour. Freshens and cleans portable holding tanks for reuse and storage. Harmless to plastic parts, mechanical parts and seals. And use it at home. It's perfect for porcelain bowls, too.

**THETFORD**  
CORPORATION

P.O. Box 1285 • Ann Arbor, Michigan 48106



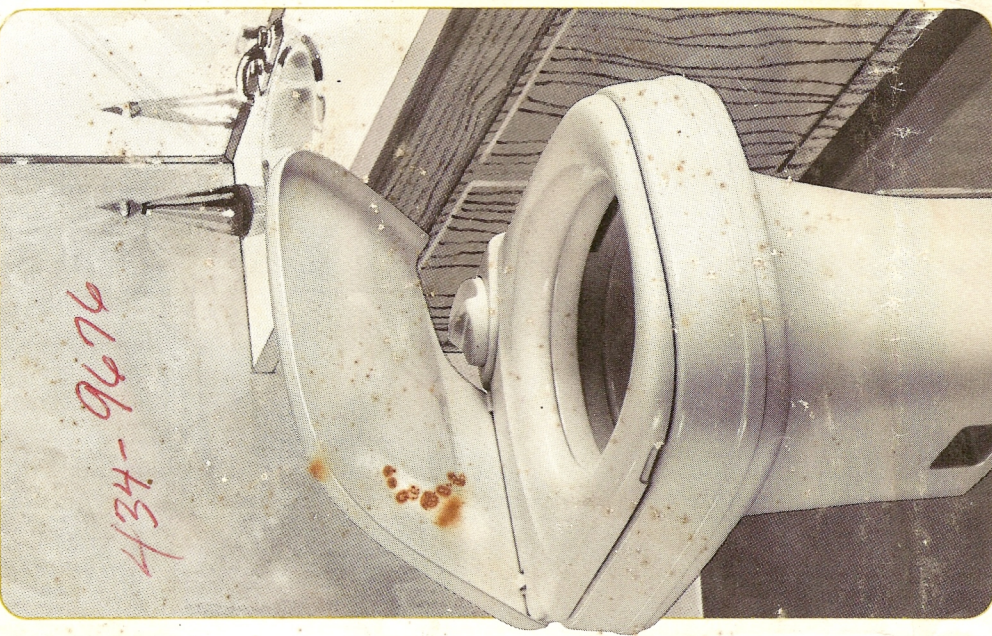
Printed in U.S.A.

Part No. 09360

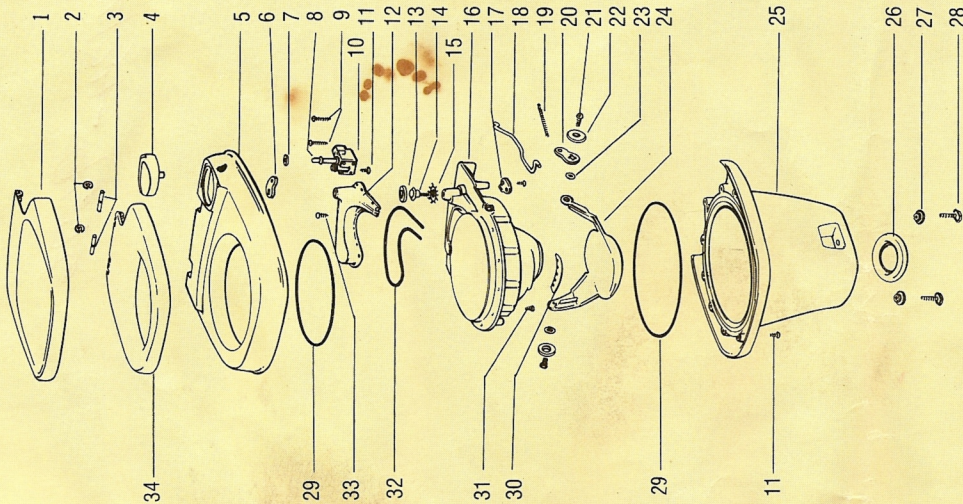
**It's a fresh new world.**  
**AQUA MAGIC III.**  
**THE INNOVATOR.**

Don't just renovate. Innovate. With lightweight Aqua Magic III. Designed with you in mind ... to provide a water seal just like the one at home. Micro Rinse flushing system cleans bowl with a minimum of water. No-splash bowl feature maintains water seal even while vehicle is in motion. Odors stay in the holding tank. Fast, easy installation. Saves time, money. Saves room in the bath. Fits neatly into tight spaces. In gold or white. Just what you've been asking for; Aqua Magic III for installations with below-floor holding tanks; Aqua Magic III Low for installations with above-floor holding tanks, combos, set-ins.

434-9676







Key Part No.	Description	Key Part No.	Description
1	08780 Cover	17	08904 Bracket, Spring Mounting
2	08142 Hinge Pin Retainer (2)	18	08874 Push Link
3	08905 Hinge Pin (2)	19	08876 Spring
4	08979 Knob Assy.	20	08873 Crank-Water Trap
5	08779 Top	21	05093 Screw (2)
6	08775 Crank, Knob	22	08872 Washer (2)
7	08902 Retainer, Stem	23	08878 Seal (2)
8	08879 Ball Valve Stem	24	08783 Water Trap
9	08894 Screw (2)	25	08784 Base (AM-III)
10	09989 Ball Valve Service Pkg.	26	09965 Base (AM-III Low)
11	03796 Screw (7 - AM-III)	27	02125 Closet Flange Seal
12	08785 Vacuum Breaker Cover	28	08897 Bolt (2)
13	08203 Float Seal	29	05387 Sealant
14	08202 Float	30	09101 Seal, Water Trap
15	09127 Star Washer	31	08896 Screw (9)
16	08782 Bowl	32	08149 Seal
		33	02694 Screw (17)
		34	08781 Seat

## Installation

- Water line fitting installation**
  - Water line connection is 3/8-18 pipe thread. Thread fitting is hand tight plus three additional full turns or 10 ft-lb torque, whichever occurs first. The ball valve must be braced with another wrench when the fitting is tightened. Removal of the flush knob by pulling straight upward allows the installer to view the connection and also provides a wrench access. An application of sealant on the threads of the fitting is recommended. Do not solder metal fittings while they are connected to the plastic valve, or damage will occur.
- Closet flange and seal**

**Note:** Carpeting between toilet base and floor may cause difficulty in obtaining a solid installation. It is best to cut away the carpet directly under the toilet, using the base of the toilet as a pattern.

  - Place closet flange seal over ring on bottom of toilet.
  - Insert the two #08897 bolts provided into closet flange. Fasten closet flange to floor.
  - Set the toilet on closet flange so that bolts project into the side access openings at the base of the toilet.
  - Use the two #03669 nuts provided and tighten onto bolts until the base of the toilet touches the floor. (Caution: DO NOT OVER TIGHTEN.)
- Water line connection**
  - Connect water line to fitting installed in step 1. (It is recommended that the water line slope downward from connection to aid in winterizing unit.)

## Operating Instructions

To flush, turn the knob on the top of the unit 90° clockwise until water swirls, then release. A short delay between turning the knob and getting a good swirl is to be expected. This delay is used to build up an internal water supply which insures a proper bowl refill, required for odor control, after the knob is released.

## Maintenance

No routine maintenance is required. To clean the unit, use Theiford Aqua Bowl or any other high grade, non-abrasive cleaner. Do not use highly concentrated or high acid content household cleaners. (No scouring powder.)

## Winterizing

- Draining method.**

Completely drain the toilet water supply line leaving the water supply valve open. This valve may be kept open by inserting a suitable object into the flush hole in the bowl. (Caution: WHEN USING AIR PRESSURE TO DRAIN WATER LINE, TOILET VALVE SHOULD BE HELD IN OPEN POSITION.)
- Antifreeze method.**

Use recreational vehicle type antifreeze to winterize the fresh water plumbing system. (Caution: NEVER USE AUTOMOTIVE TYPE ANTIFREEZE IN FRESH WATER SYSTEM. THESE ARE HIGHLY TOXIC.)

**Note:** If water is inadvertently frozen in the toilet, do not attempt to flush until the ice is thawed. Otherwise damage to toilet could occur.

## SERVICE

Any parts being sent to a Theiford Certified Center for warranty consideration must include the following information:

- Your Name and Address
- The product name, model, serial number and color
- The type of recreational vehicle or boat (Brand Name and year) on which the product is used
- The reason for return
- Proof of date of purchase  
(See warranty section for service information.)

## Trouble Shooting

**Symptom: Water keeps running into the bowl.**

**Cure:** Check to see that the knob closes all the way (goes through 90° rotation). Sticking may be caused by foreign material in the bottom of the bowl.

If water running persists, and the knob works satisfactorily, replace the ball valve, Part #08881. This is accomplished by unsnapping the knob, disconnecting the water line, and removing the two 1 5/8" long screws on either side of the base of the ball valve stem, and the 1/2" long screw which is accessible through the hole in the toilet base. Pull down on the valve to remove. When installing the new ball valve, make sure the #08903 seal is in place on the exit end of the valve before the valve is screwed in place.

**Symptom: Toilet leaks; there is water on the floor.**

**Cure:** If the leak is in the back of the toilet, check the water supply line connection, and refer to the installation instructions.

If the leak is at the closet flange area, check the closet flange nuts for tightness. If leak continues, remove the toilet and check the closet flange height. The height should be between 1/4" and 7/16" above the floor. Adjust accordingly and replace the closet flange seal if damaged.

**Symptom: Poor flush.**

**Cure:** The knob must be held fully open during the flush. A good flush should be obtained within five seconds.

If the problem persists, remove the water and check the water supply. The water rate should be at least eleven quarts ensure an adequate flush.