

SPIRIT / FIESTA / SIMPLICITY SPRING REPLACEMENT INSTRUCTIONS

052911-001

The following instructions are for replacement of Spirit, Fiesta, Simplicity and Simplicity Plus spring assemblies. Follow the instructions carefully and pay particular attention to the cautions.

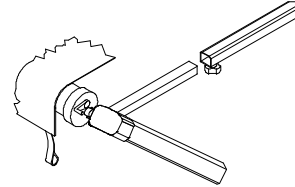
TOOLS REQUIRED:

Vise Grips, Phillips Screwdriver, #1 Square Head Bit, 7/16" & 5/16" Socket or Nut Driver

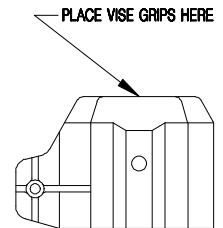
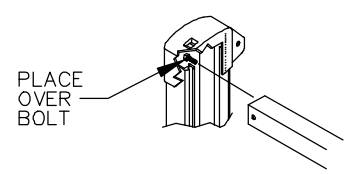
REPLACEMENT OF FRONT SPRING

1. Roll awning out to the down position.
2. Move to rear of awning. **(For Spirit and Fiesta)** Slide braces to top of arm and tighten black locking knob. **(For Simplicity & Simplicity Plus)** Remove brace from stored position and extend brace until the end is wedged under the roller end plug and above the end plug attaching bolt. Tighten black locking knob.
3. Move to front of awning. **(For Spirit Only)** Remove black push nut from brake lever.
4. **(For Spirit Only)** Swing link arm off of brake lever.
5. Attach vise grips to the flat portion on top of end plug.
6. Remove black 7/16" Hex Head Bolt or Phillips Head Bolt attaching end plug to the arm channel.
7. Grasp on to vise grips and place brake lever in the Roll In or Close position. Carefully lift end plug off of arm channel.

Spirit / Fiesta

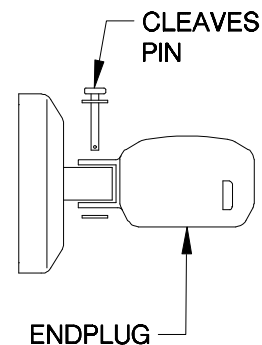
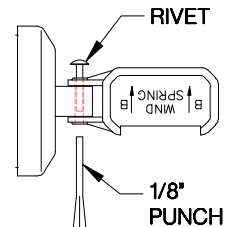
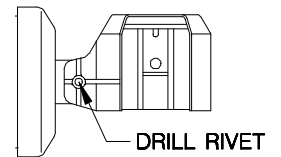


Simplicity



CAUTION: SPRINGS ARE UNDER TREMENDOUS TENSION AND WILL QUICKLY UNWIND ONCE BRAKE LEVER IS PLACED IN THE ROLL IN OR CLOSE POSITION AND THE END PLUG IS OFF OF THE ARM CHANNEL. TAKE EXTREME CAUTION AND SLOWLY BACK THE TENSION OFF THE SPRINGS BY ROTATING THE VISE GRIPS. EXTREME CARE MUST BE TAKEN OR POSSIBLE INJURY OR DAMAGE MAY OCCUR! DO NOT LET GO OF VISE GRIPS OR SCREWDRIVER UNTIL ALL TENSION IS OFF OF SPRING!

8. Remove screws that are attaching the end caps to the roller tube. These should either be 5/16" Hex Head, Phillips Head or Square Drive screws.
9. Remove spring assembly from roller tube.
10. Turn spring until the flared or rolled end of the semi tubular rivet is facing up.
11. Take 3/16" drill bit and drill out the rivet until the rolled portion is drilled off.
12. Drive rivet out using the 1/8" pin punch and hammer.
13. Place shaft of new spring assembly between ears of end plug and line up holes. Inserting pin punch through the back of the end plug ear will assist in lining up holes.
14. Place one washer over cleaves pin shaft. Push cleaves pin from the front side, through the front hole in the new end plug, through the spring shaft and then through the back hole in the end plug.
15. Place the other washer over cleaves pin shaft and insert cotter pin through hole in cleaves pin.
16. Take a flat screwdriver and spread the ends of the cotter pin to prevent it from falling out.

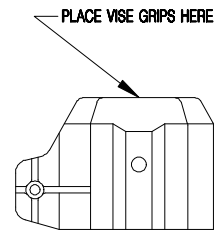


(See Next Page)

17. Install new spring assembly into roller tube and attach end cap with the square headed screws provided.

18. Attach vise grips to the flat portion on top of end plug.

19. Use the vise grips to turn the end plug the correct amount of turns in the direction of the arrows shown on the top of the end plug. (see wind chart)



20. Place end plug back over the top of the arm channel. Re-attach with previously removed bolts.

21. **(Spirit Only)** Place link arm over brake lever. Secure by placing the black push nut over the shaft of the brake lever.

REPLACEMENT OF BACK SPRING

FOR REPLACING BACK SPRINGS, MOVE FROM FRONT TO REAR AND THEN PROCEED WITH STEP 2 ON THE PREVIOUS PAGE. CONTINUE TO FOLLOW THE APPROPRIATE REMAINING STEPS AS DESCRIBED ON THE PREVIOUS PAGE. ONCE YOU REACH STEP 7, TAKE NOTE THAT THE REAR DOES NOT HAVE A BRAKE LEVER. FOLLOW THE STEPS AND THE CAUTION LISTED BELOW TO ENSURE THE SPRING TENSION IS REMOVED PROPERLY.

1. For square versions, grasp on to vise grips and carefully lift end plug off of arm channel. For rounded versions, grasp hold of the screwdriver and carefully lift end plug off of arm channel.

CAUTION: SPRINGS ARE UNDER TREMENDOUS TENSION AND WILL QUICKLY UNWIND ONCE END PLUG IS OFF OF THE ARM CHANNEL. TAKE EXTREME CAUTION AND SLOWLY BACK THE TENSION OFF OF THE SPRINGS BY ROTATING THE VISE GRIPS OR SCREWDRIVER! EXTREME CARE MUST BE TAKEN OR POSSIBLE INJURY OR DAMAGE MAY OCCUR! DO NOT LET GO OF VISE GRIPS OR SCREWDRIVER UNTIL ALL TENSION IS OFF OF SPRING!

2. Continue with steps 9 through 14 above using wind chart below.

WIND CHART

SPIRIT UTILITY SLOT - VINYL

Size	Spring Type	Winds
8' - 10'	Regular	18
11'-13'	Regular	19
14'-16'	Regular	20
17'	Regular	21
18'-20'	Heavy	13

3-SLOT ROLLER- VINYL

Size	Spring Type	Winds
8'-10'	Regular	15
11'-13'	Regular	16
14'-16'	Regular	17
17'-18'	Regular	18
19'-21'	Regular	20

SPIRIT UTILITY SLOT - ACRYLIC

Size	Spring Type	Winds
8'-10'	Regular	16
11'-13'	Regular	17
14'-16'	Regular	18
17'	Regular	19
18'-20'	Heavy	14
21'-24'	Heavy	15
25'	Heavy	16

3-SLOT ROLLER- ACRYLIC

Size	Spring Type	Winds
8'-10'	Regular	16
11'-13'	Regular	17
14'-16'	Regular	18
17'	Regular	19
18'-20'	Heavy	14
21'-24'	Heavy	15
25'	Heavy	16

NOTE: ALL WINDS LISTED ABOVE ARE FOR WHEN THE AWNING IS IN THE ROLLED OUT POSITION. AWNINGS IN THE ROLLED UP POSITION OR TRAVEL POSITION ALL HAVE 8 LESS WINDS.