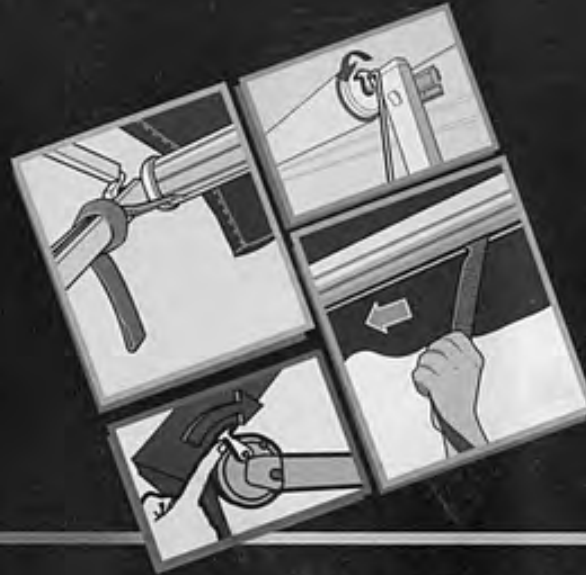


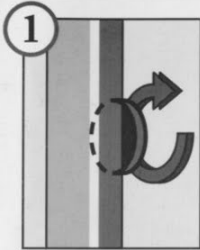
*A&E 8500 • Grande Pavilion • 9000  
Patio Awnings*



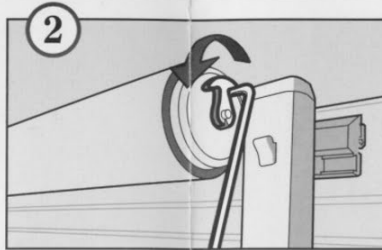
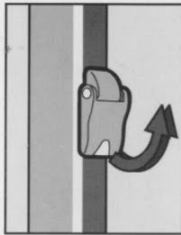
# User's Guide

by The Dometic Corporation

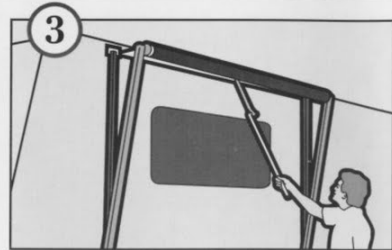
## TO OPEN AWNING:



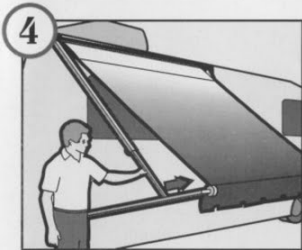
Loosen the black adjustment lock knob behind each main arm. Flip travel lock latches up.



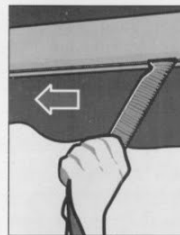
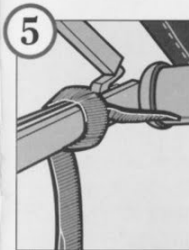
Using the provided pull rod, reach up and pull the locking lever forward to release the awning.



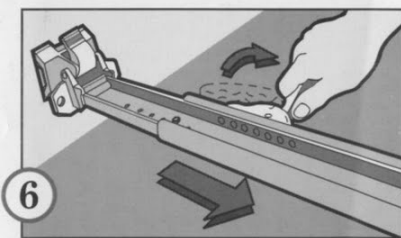
Hook the rod into the loop of the pull strap, and pull the awning all the way out.



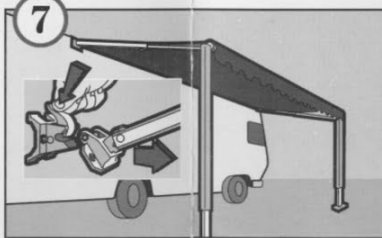
Slide one rafter arm up until it snaps into place. Push down on the main arm to remove slack from the fabric, and tighten the black adjustment knob. Repeat for other side.



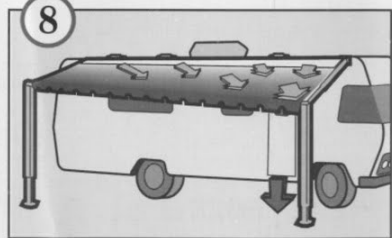
Slide the pull strap to the right end of the roller, and wrap it around the main arm.



Pull up on the lift handle and raise the arm assembly to the desired height. Swing handle in, and allow the lock button to snap into one of the holes. Repeat for other side.



Press the release lever at the bottom end of one main arm, pull the arm assembly outward to a vertical position, and readjust height. Repeat for other side. Drive provided stakes through holes of each patio foot into the ground.

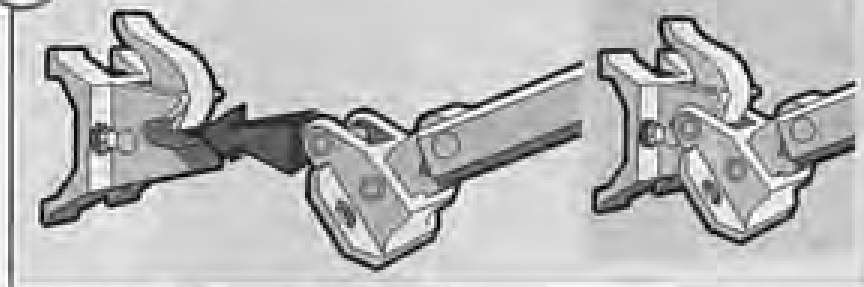


During rain, lower one end to allow water to flow off.

**CAUTION:** Whenever heavy or prolonged rain or wind is anticipated, or you will leave the awning unattended, it is best to close the awning. Damage as a result of weather is not covered by warranty.

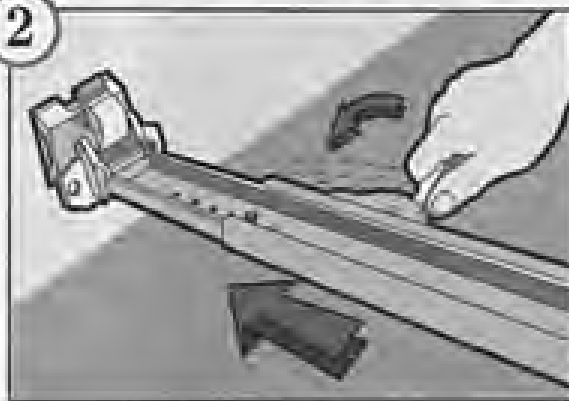
## TO CLOSE AWNING:

1



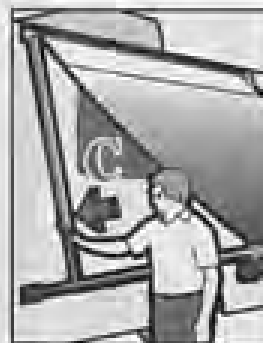
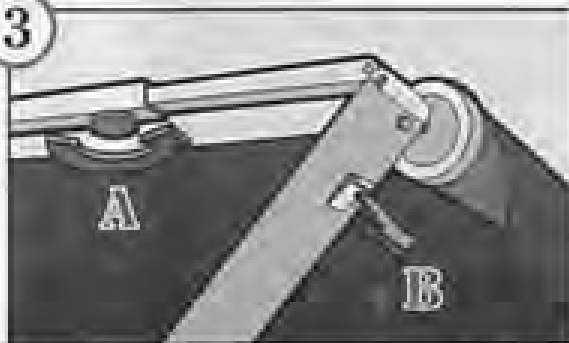
Pull stakes from the ground, swing arm toward the vehicle, and snap the patio foot into the bracket. Repeat for other side, and proceed to next step.

2



Raise the lift handle to release the lock button. Lower main arm to the stop plug. Swing the handle in to engage the lock button in a hole. Repeat for other side.

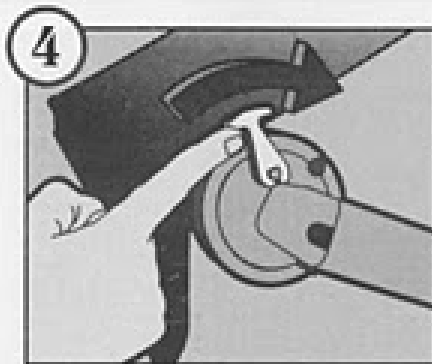
3



Loosen black adjustment knob, lift slider catch, and slide the rafter arm down to the bottom of the main arm. Leave black adjustment knob loose. Repeat for other side.

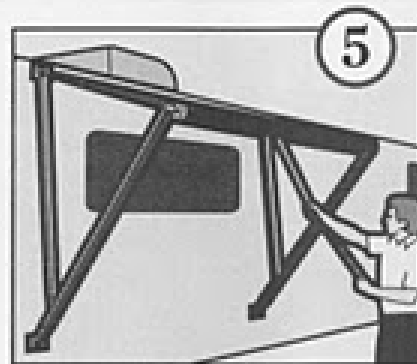


→ TO CLOSE AWNING (CONTINUED)



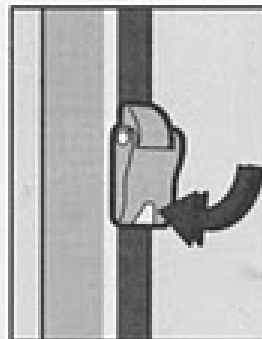
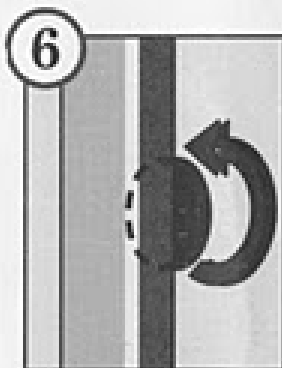
Grasp the pull strap, pull toward you, and flip the locking lever up to the ROLL UP position.

**CAUTION:** Do not release the awning now. It is under tension and could snap back against the vehicle side.



Slide the pull strap to the center, and using it to control speed, allow the awning to return to vehicle side.

**NOTE:** Allow the strap to wind diagonally to prevent a bulge in the fabric.



Tighten black adjustment knob, and flip travel lock latch down. Repeat other side. The awning is now ready for travel.



*For longer awning life and better performance use only genuine A&E awning care products, available at finer RV retailers.*

## HELPFUL HINTS FOR AWNING CARE

### ALL AWNINGS:

- Whenever the awning is wet while rolled up, as soon as conditions allow, roll it out and let it dry before rolling it up again. This will help prevent mildew and rotting.
- Mildew does not form on the fabric itself, but on the accumulated dust, dirt and grime. Periodically clean vinyl or woven acrylic fabric with genuine A&E CANOPY CLEAN™. After cleaning, acrylic fabric should be treated with ACRYLIFE™ (see below).
- Always make sure the awning is extended high enough before opening the entry door.
- Apply A&E GO-EASY™ spray lubricant as needed to keep the awning's moving parts operating smoothly and to help prevent corrosion.

### A&E 8500 and GRANDE PAVILION:

- Abrasion, weather and long hours in the sun are vinyl's worst enemies. When the canopy is clean and dry, apply A&E VINYL FORMULA 201 spray with UV blocker to maintain color and gloss and extend the fabric's life.

### A&E 9000:

- In addition to its beauty and soft translucence, woven acrylic fabric offers the advantages of strength and breathability. It is water repellent; but because it is a woven cloth, it is not waterproof. Use genuine ACRYLIFE™ by A&E once a year for maximum water integrity.
- Avoid touching the underside of the 9000 canopy when it is wet. To do so will break the surface tension of the water and encourage seepage through the fabric.
- Because woven acrylic is of a much lighter weight than vinyl, shifting may occur if the awning and pull strap are not centrally aligned with the fabric roller tube while the awning is being rolled up. If necessary, roll the awning out and adjust the alignment.

### WHEN TO GET MORE HELP:

- If malfunctions occur that cannot be corrected by reviewing this user's guide, contact a qualified Dometic service technician.



*Please Note:* A slight "travel line" may appear where the door roller contacts the awning fabric. This is considered normal and does not affect the integrity of the awning.

# A&E Systems by Dometic

## PATIO AWNING LIMITED WARRANTY

**THE SELLER NAMED BELOW MAKES THE FOLLOWING WARRANTY WITH RESPECT TO THIS A&E AWNING BY DOMETIC:**

### 1. Lifetime Roller Tube Limited Warranty.

- 1A. The Roller Tube is warranted not to rust, bend or break under any condition, including water pooling or high winds.
- 1B. This Roller Tube Limited Warranty is made only to the First Purchaser (hereinafter called the "Original Purchaser") and will be in effect during the lifetime of this awning. It is suggested the Original Purchaser retain a copy of the bill of sale as evidence of the date of purchase.
- 1C. This Warranty does not cover any damage to the Fabric, Torsion and Hardware caused by the bending or breaking of the Roller tube.
- 1D. In order to obtain the benefits of this Warranty, you should return the product which you find defective to the Seller named below or to a Dometic Service Center during the period that this Warranty is in effect. All charges incurred in delivery of the awning to Seller, or to a Dometic Service Center, and in picking it up after the warranty service has been completed, must be paid by the Original Purchaser.
- 1E. To obtain the location of the nearest Authorized Service Center, please call 1-800-544-4391. In Canada, call 1-519-853-4390.
- 1F. Any item returned in the manner described in paragraph (1D) will be examined by the Seller or the Dometic Service Center to which it is returned. If it is found that the returned item was defective in material and workmanship, the Seller or the Dometic Service Center receiving it will repair it without charge for material or labor during the first year of ownership by the Original Purchaser.
- 1G. The Dometic Corporation will pay freight on the replacement Roller Tube during the first year of ownership by the Original Purchaser.
- 1H. Labor will be paid by the Original Purchaser during the second year through the remaining lifetime of this roller tube.

### 2. 5 year Fabric, Torsion and Hardware Limited Warranty.

- 2A. This Limited Warranty will be in effect for five years from the date of purchase.
- 2B. This Limited Warranty is made only to the First Purchaser (hereinafter called the "Original Purchaser") who acquires this product for their use. It is suggested the Original Purchaser retain a copy of the bill-of-sale as evidence of the date of purchase.
- 2C. This Warranty covers only parts specified in item (2) which shall be free from defects in material and workmanship under normal use. This Warranty does not cover conditions unrelated to the material and workmanship of the product. Such unrelated conditions include, but are not limited to: (a) faulty installation and any damage resulting from such; (b) the need for normal maintenance and any damage resulting from the failure to provide such maintenance; (c) failure to follow Seller's instructions for use of this product; (d) any accident to; (e) damage as a result of storm, heavy rains, water pooling, acts of God, or misuse of, any part of this product and any alteration by anyone other than Seller or its authorized representative.
- 2D. The fabric is warranted against:
  - Excessive fading. (There will be slight color change due to ultraviolet rays).
  - Holes caused by mildew. (Mildew will form on dirt and stain the fabric if fabric is not kept clean).
  - Excessive cracking, peeling, hardening or loss of strength while used under normal conditions.
- 2E. In order to obtain the benefits of this Warranty, refer to item (1D), (1E) and (1F).
- 2F. The cost of replacement parts will be provided during the second through fifth year of ownership by the original purchaser, per the chart below. Labor will be paid by the Original Purchaser.

#### 2 - 5 YEAR PRO-RATED WARRANTY

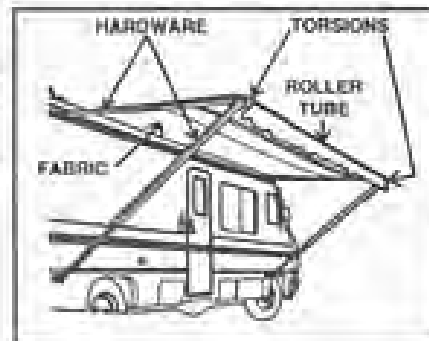
2nd year	/	customer pays 20% of retail price
3rd year	/	customer pays 50% of retail price
4th year	/	customer pays 70% of retail price
5th year	/	customer pays 95% of retail price

- 2G. The Dometic Corporation will pay freight on replacement parts during the first 90 days of ownership by the original purchaser.

- 3. The Seller does not authorize any person or company to create any warranty obligation or liability on their behalf.
- 4. IN NO EVENT SHALL EITHER SELLER BE LIABLE FOR INCIDENTAL OR CONSEQUENTIAL DAMAGES. SOME STATES DO NOT ALLOW THE EXCLUSION OR LIMITATION OF INCIDENTAL OR CONSEQUENTIAL DAMAGES SO THE ABOVE LIMITATION OR EXCLUSION MAY NOT APPLY TO YOU.
- 5. ANY IMPLIED WARRANTY, INCLUDING THE IMPLIED WARRANTY OF MERCHANTABILITY AND FITNESS FOR ANY PURPOSE, IS LIMITED TO THE DURATION OF THIS LIMITED WARRANTY. SOME STATES DO NOT ALLOW LIMITATIONS ON HOW LONG AN IMPLIED WARRANTY LASTS, SO THE ABOVE LIMITATION MAY NOT APPLY TO YOU.
- 6. THIS WARRANTY GIVES YOU SPECIFIC LEGAL RIGHTS, AND YOU MAY ALSO HAVE OTHER RIGHTS WHICH VARY FROM STATE TO STATE.

**SELLER:**  
**THE DOMETIC CORPORATION**

The Warranty Department  
509 South Poplar Street  
LaGrange, Indiana 46781





# AWNING



**8500, 9000, 9500 &  
Grande Pavilion**

**Fabric Roller Tube Assembly  
with Universal Hardware**

**USA  
SERVICE OFFICE**  
The Dometic Corp.  
509 So. Poplar St.  
LaGrange, IN 46761

**CANADA**  
Dometic Dist.  
866 Lange Dr.  
Cambridge, Ontario  
CANADA N3H 2N7

**INSTALLATION  
INSTRUCTIONS**

**MODELS  
8500, 9000,  
9500 &  
Grande Pavilion**

## INSTALLATION

COVERED BY PATENT 4,524,791

### Application

The A&E Awning is designed and intended for use on motorhomes, mini-motorhomes, 5th wheels and travel trailers with straight or curved sides. For curved sides, please see the separate Hardware List in the Dealer Service Manual for the appropriate model.

**IMPORTANT:** Read ALL of the following steps before beginning installation.

The Dometic Corporation reserves the right to modify appearances and specifications without notice.

Installation of A&E Awnings may at some points, require three people. Use the following procedure to assure a properly installed, and properly functioning awning.

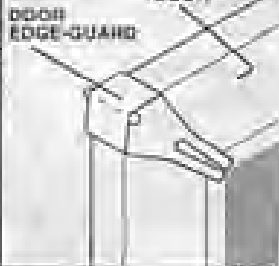
FIG. 1A



ENTRY DOOR

AWNING ROLLER

FIG. 1B



SCREEN DOOR

DOOR EDGE-GUARD

1. Where the A&E Awning is to be mounted above the entry door, the door roller must be installed on the exterior side of the door in the extreme upper corner above the door handle. (FIG. 1A)

In addition, if there is a screen door inside the regular door, a door edge-guard must be installed on the exterior side of the screen door, in the extreme upper corner opposite the door hinges. (FIG. 1B)

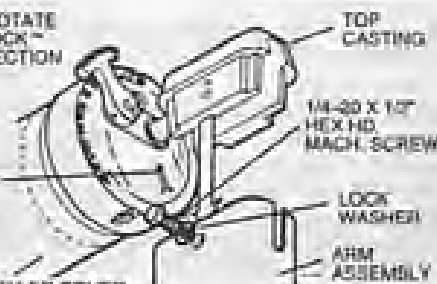
This is so that when the entry door or the screen door is swung out while the awning fabric is extended low, the door roller or the door edge-guard (instead of the sharp door corner) makes contact with the underside of the fabric.

FIG. 2

DO NOT ROTATE SAFE-T-LOCK™ LOCK DIRECTION LEVER

DO NOT REMOVE COTTER PIN AT THIS TIME

AWNING ROLLER COVER



TOP CASTING

1/4-20 X 1/2" HEX HD. MACH. SCREW

LOCK WASHER

ARM ASSEMBLY

2. Carefully lay the fabric roller tube assembly on "V" troughs or other well protected surface to prevent fabric damage. Secure arm assemblies to the respective top castings using the 1/4-20 x 1/2" hex. hd. machine screws and 1/4" lock washers. (FIG. 2)

**CAUTION:** DO NOT REMOVE the cotter pins at this time and DO NOT attempt to rotate the Safe-T-Lock™ Lock Direction Level until installation is complete. (Lever has been pre-set in the roll-up position.) (FIG. 2)

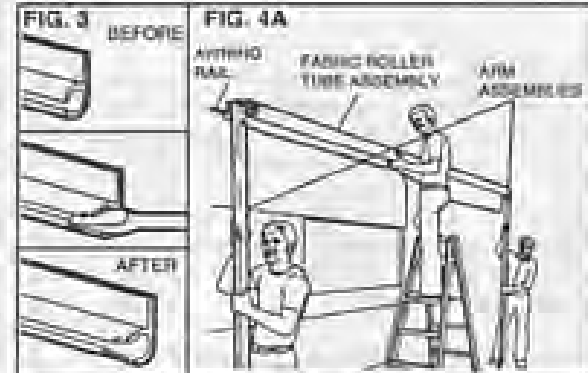
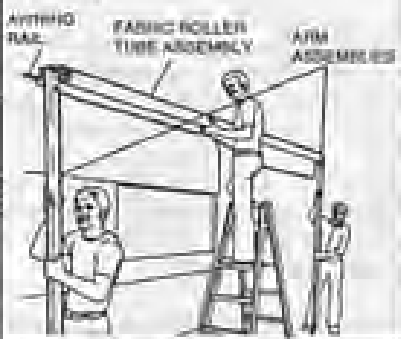


FIG. 3

BEFORE

FIG. 4A



AWNING RAIL

FABRIC ROLLER TUBE ASSEMBLY

ARM ASSEMBLY

- 3A. For 8500, 9500 & Grande Pavilion Awning.

(9000 Awning go to Step 3B)

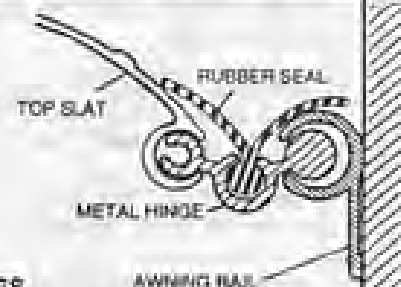
Prepare the awning rail to accept the awning roller cover by selecting the end from which the awning shall be fed, then widen that end of the rail with a flat screwdriver. (FIG. 3)

- 3B. For 9000 Awning (Model 839(X)(XX)A, Style I): Do NOT flare the leading edge of the awning rail, as it may snag or catch the rubber seal. Instead, spray WD-40 or similar lubricant the length of the awning rail prior to inserting the shield assembly.

- 3C. For 9000 Awning (Model 839(X)(XX)B, Style II): Prepare the awning rail as in Step 3A.

4. With one person grasping each support arm, carefully lift the entire assembly to an upright position. Keeping the two arm assemblies Parallel to each other to avoid excessive twisting and possible damage to assembly, walk the awning back to the end where the awning rail was prepared. (FIG. 4A)

FIG. 4B



TOP SLAT

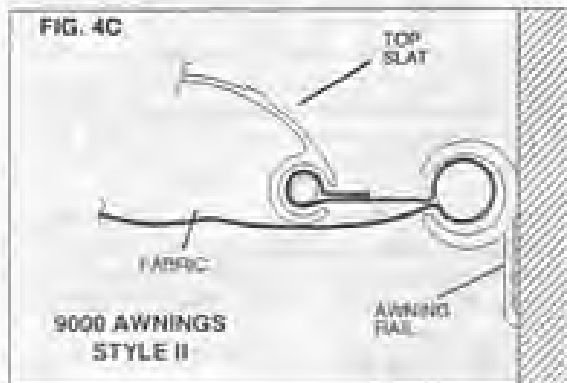
RUBBER SEAL

METAL HINGE

9000 AWNINGS STYLE I

AWNING RAIL



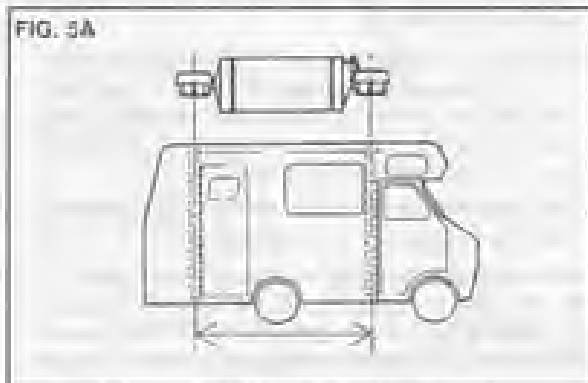


A third person is now required to feed the roller cover into the awning rail while standing on a step ladder, while the other two walk the entire awning assembly forward and into the desired position.

**NOTE:** On 9000 Awning (Style I): As the solid metal hinge is inserted into the awning rail, lift the flange of the rubber seal OVER the top of the awning rail. (FIG. 4B)

#### 5. Installation of Top Mounting Brackets.

After the complete awning assembly has been threaded into the awning rail, check to be sure that its position allows for solid mounting of the top and bottom brackets and that support arms are in desired location (not restricting use of doors, access doors, etc.). (FIG. 5A)



Place top bracket in position over awning rail as shown in FIG. 5B, and align bracket directly behind and centered with the main support arm.

Pull the main support arm away from the top mounting bracket and rafter arm. Mark the top bracket position and pre-drill the two holes using a 3/16" drill bit. (Use 7/32" drill bit if drilling through steel). Install top bracket with two #14 x 3" hex. hd. screws. (FIG. 5C) It is recommended that clear silicon be used to seal the screw where it enters the coach.

Place main support arm over the extension portion of the top bracket. (FIG. 5B).

FIG. 5B

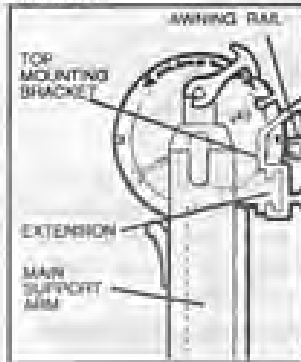
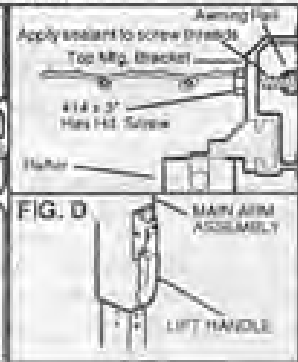
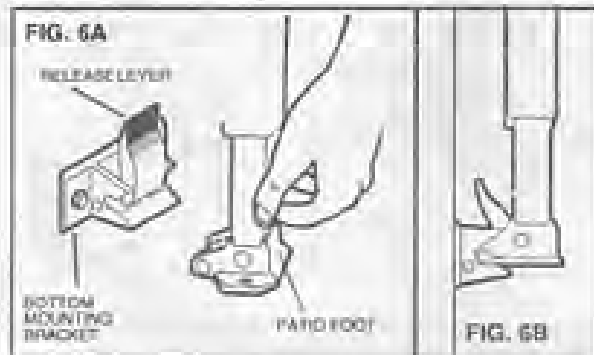


FIG. 5C



Additional stability can be gained at this point by lifting handle (releasing lock button) on the side of the main arm and CAREFULLY allowing the inside adjustable arm to extend to the ground. (FIG. 5D)

Install remaining top mounting bracket using the same procedure.

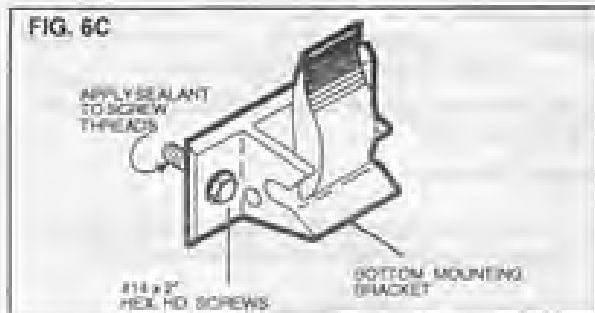


#### 6. Installation of Bottom Mounting Brackets.

Connect the patio foot located at the bottom of the adjustable arm, to the bottom mounting bracket, guiding the shank portion of the patio foot into its receptacle in the bottom bracket and allow the patio foot to slip over the bracket. (FIGS. 6A & 6B). Release the lock button by lifting the handle on the side of the main arm and slide the adjustable arm up to the desired mounting position. Always select the position that offers the best supporting structure for mounting the bottom bracket, i.e. mounting the bottom bracket directly into the floorline, molding, etc.

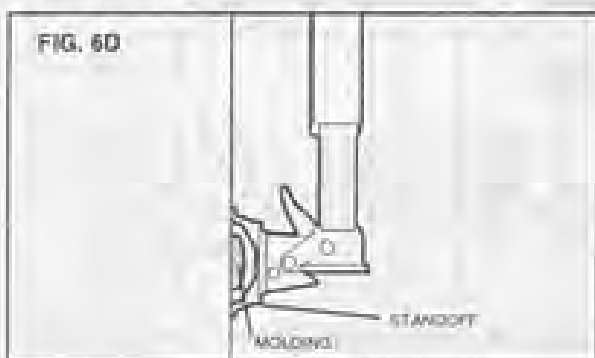
Allow the lock button (in handle) to catch one of the pre-punched holes that are spaced 3/4" apart.

Once again, check to be sure that the top portion of the main arm is still temporarily resting over the top bracket. Mark position of bottom bracket so that both holes are positioned over the floorline. Disconnect bottom bracket from patio foot and pre-drill two 3/16" dia. holes through the marked locations. (Use 7/32" dia. if drilling through steel).



Secure bracket using two #14 x 2" hex head screws. (FIG. 6C). It is recommended that clear silicon be used to seal the screw where it enters the coach.

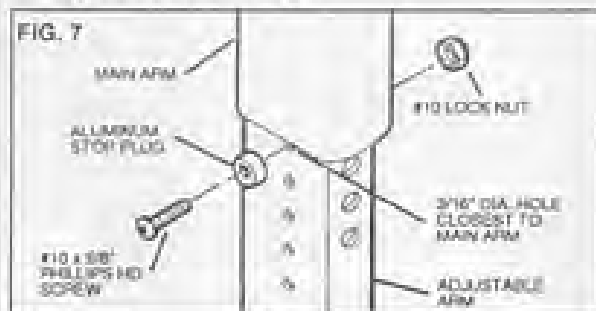
Repeat for other side.



**NOTE:** If curved hardware is being installed or if installing over a molding, A&E Standoff Kit 3104781 must be used. See FIG. 6D.

#### 7. Installation of Stop Plugs.

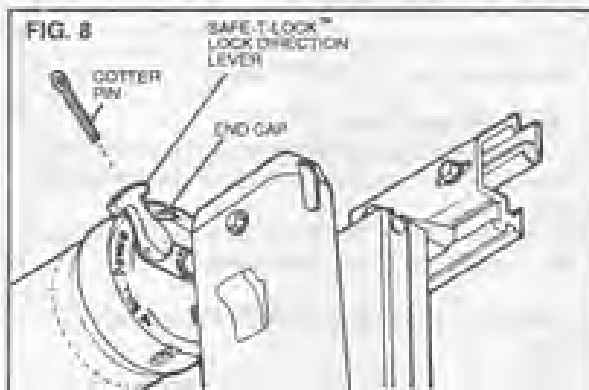
**CAUTION:** This step is essential for the proper functioning of all A&E Awnings.



After both bottom brackets are installed, and both main support arms are engaged into pre-punched push button holes on the adjustable arms, depress the push button on one main arm and **RAISE THE MAIN ARM UP BY ONE HOLE ONLY.**

On the front of the adjustable arm, locate the small 3/16" dia. hole which is closest to the bottom of the main arm (FIG. 7). Install aluminum stop plug in this hole by inserting a #10 x 5/8" phillips screw through the stop plug and through the hole. Secure with a #10 lock nut (FIG. 7).

**THE MAIN SUPPORT ARM SHOULD NOW COMPLETELY CLEAR THE TOP BRACKET AS IT SWINGS TOWARD THE VEHICLE SIDE.**  
Repeat for other side.



#### 8. Releasing Pre-Set Tension.

Remove cotter pin that is holding factory pre-set tension. The cotter pin is found in the roller tube - tube end cap (FIG. 8). For easier removal, twist the roller tube as if unrolling awning while pulling on cotter pin.

### **! WARNING**

When cotter pins are removed, springs are under tension. The awning will attempt to close. Keep hands clear of hardware and roller tube.

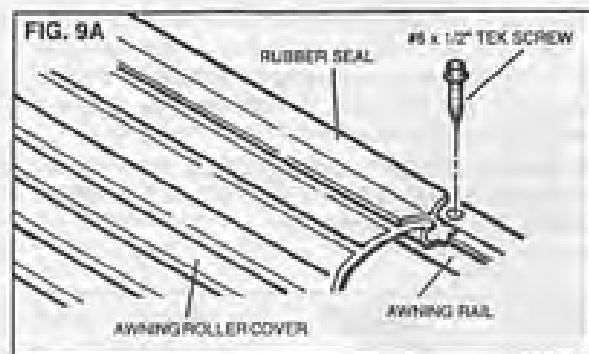
Discard pin and repeat for other side.

The awning should now roll up snugly against the vehicle side. If no tension is felt, check to make sure the Safe-T-Lock-Lever is in the roll-up position.

#### 9. Securing Awning Roller Cover.

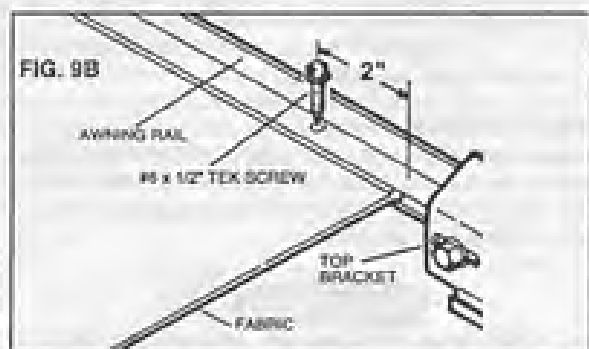
The awning roller cover must be secured from shifting within the awning rail.

Open and close awning a few times to allow for natural self-adjustment of awning.



**9A. 9000 Awnings (Style I):**  
 Drill a 1/8" hole through the awning rail just past each end of the metal hinge. Place a #6 x 1/2" Tek screw through the hole (FIG. 9A).  
**NOTE:** Do not put the Tek screw into metal hinge as this will prevent the hinge from pivoting.

**9B. 8500, 9000, 9500 & Grande Pavilion (Style II) Awnings:**



Center the roller cover between the two top brackets. Measure in 2" from the edge of the roller cover and drill a 1/8" hole through the awning rail (FIG. 9B).

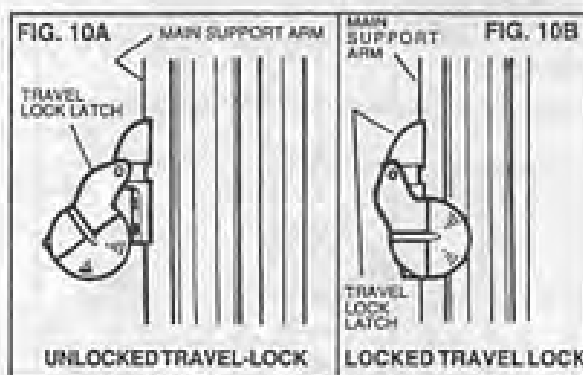
Secure by driving a #6 x 1/2" Tek screw through the rail and into the hanger bead.

Repeat at other end.

10. Operate awning according to the Operating Instructions to check that all parts function properly.

**11. To Secure Awning for Travel.**

For added security and rattle-free travel, tighten adjustment lock knob. Flip travel lock down into locked position. (FIGS. 10A & 10B).



**MODELS 8480000.X01 & 8480000.X02**  
**UNIVERSAL HARDWARE**  
**FOR A&E 8000, 8500 & 9000**

**USA**  
SERVICE OFFICE  
The Dometic Corp.  
509 So. Poplar St.  
LaGrange, IN 46761

**CANADA**  
Dometic Dist.  
866 Lings Dr.  
Cambridge, Ontario  
CANADA N3H 2N7

● **ROBINHOOD**

.001; .101; .201; .301; .401; .501 Hardware

● **AMERICAN CLIPPER**

.002; .102; .202; .302; .402; .502 Hardware

● **FMC 2900R**

.002; .102; .202; .302; .402; .502 Hardware

**INSTALLATION SUPPLEMENT**

**MODELS**  
**8480000.X01**  
**8480000.X02**

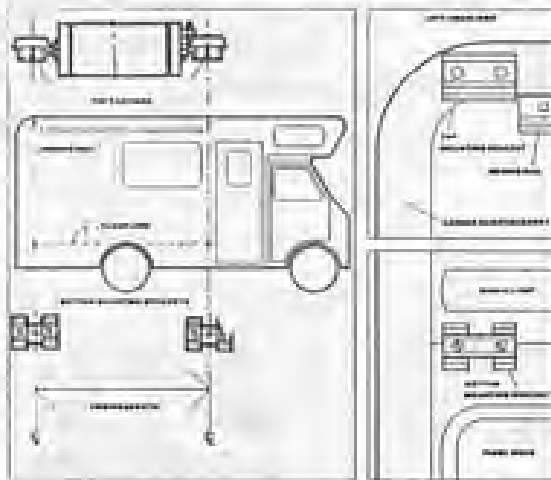
## ROBINHOOD

.001, .101, .201, .301, .401, .501  
For A&E 9000, 8500 & 8000 Models

**IMPORTANT:** Read all installation procedures before starting installation.

This installation Supplement lists important factors to be considered when installing an A&E Awning on a Robinhood Coach. For complete step-by-step instructions, refer to the 8000, 8500 & 9000 Fabric Roller Tube Assembly with Universal Hardware Installation Instructions.

- The two Top Mounting Brackets should be located next to the ends of the existing Awning Rail. The distance between these Top Mounting Brackets, center-to-center, is the awning length.
- The Top Mounting Brackets must be located along the corner reinforcement of the coach.
- A wood blocking may be found behind where the Right (front) Top Mounting Bracket is to be installed. However, nothing solid may be found for the Left (rear) Top Mounting Bracket. In such a case, first rivet on a metal plate to provide a thicker mounting base for the Bracket.
- Locate Bottom Mounting Brackets along the floor line (seam) running horizontally. The Left (rear) Bottom Mounting Bracket will fall between the signal lamp and the small panel door.



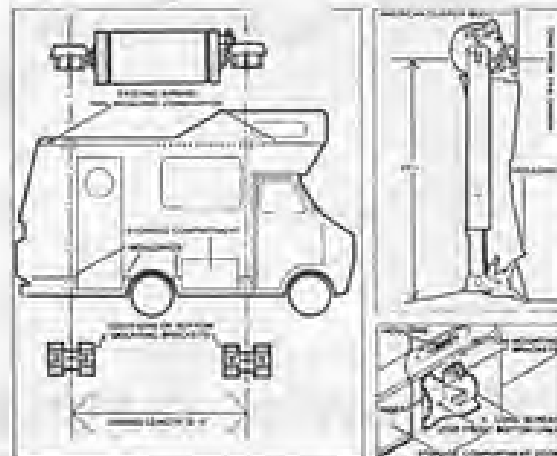
## AMERICAN CLIPPER

.002, .102, .202, .302, .402, .502  
For A&E 9000, 8500 & 8000 Models

**IMPORTANT:** Read all installation procedures before starting installation.

This installation Supplement lists important factors to be considered when installing an A&E Awning on an American Clipper. For complete step-by-step instructions, refer to the 8000, 8500 & 9000 Fabric Roller Tube Assembly with Universal Hardware Installation Instructions.

- The American Clipper, as of date, is made in one size only, and the appropriate Awning size is 12'-0".
- First, locate and mount the Right-hand (front) Bottom Mounting Bracket. It should be mounted just to the right of the storage compartment, and 69-1/4" from the existing Awning Rail.
- NOTE: For the Front Bottom Mounting Bracket only, use 4" long screws (not supplied).
- Use the Bracket Inserts for both Front and Rear Bottom Mounting Brackets.
- The center-to-center distance from the Awning Rail to both Bottom Mounting Brackets is 69-1/4".
- The Top Mounting Brackets are to be mounted against the existing awning rail/moulding combination.



## FMC 2900R

.002, .102, .202, .302, .402, .502  
For A&E 9000, 8500 & 8000 Models

**IMPORTANT:** Read all installation procedures before starting installation.

This Installation Supplement lists important factors to be considered when installing an A&E Awning on an FMC 2900R. For complete step-by-step instructions, refer to the 8000, 8500 & 9000 Fabric Roller Tube Assembly with Universal Hardware Installation Instructions.

- The Bottom Mounting Brackets are to be located along the steel beam at the floor level of the RV.

**NOTE:** This beam can be seen through the service access door at the lower left-hand corner of the vehicle.

- The Top and the Bottom Mounting Brackets for the Right-Hand (front) Side are to be located along the steel rib adjacent to the left side of the central door.

- From this vertical steel rib, another rib may be found exactly 12 feet to the left (rear) of it.

Although the required awning is found to be a 12-footer, the exact awning length should be determined by actually measuring the distance between the two Awning Top Castings, centerline-to-centerline.

This measured awning length is transferred to the distance between the two Bottom Mounting Brackets.

- The height of the Awning Rail from the center of a Bottom Mounting Bracket is to be 67".

**CAUTION:** When installing the Awning Rail, be careful of electrical wiring that may exist behind the screw locations.

- The Top and the Bottom Mounting Brackets for the Right-Hand (front) Side must be positioned close to the edge of the door frame, since the steel rib is narrow (approx. 2") and right next to the door.

**NOTE:** Because of the surface configuration around the door, a blocking such as a stack of washers may be required for the Mounting Brackets.

